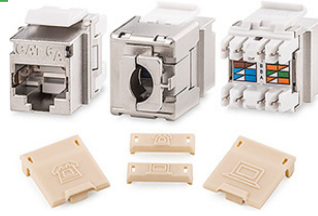


Detailed Specification & Technical Data

KJS458MT-C6AC

Category 6A Screened Jack MT Series



PRODUCT OVERVIEW	-
Product Description	Category 6A Screened Keystone Jack, T568A/B Wiring
Product Overview	<p>Signamax category 6A screened keystone jacks are designed to meet 10 Gigabit IEEE 802.3an rev. 1.0 transmission requirements, and are guaranteed to meet or exceed TIA-568-C.2 performance specifications. Screened keystone jacks with an overall overlap solid shielding design support category 6A 100-meter channel performance.</p> <p>Category 6A screened keystone jacks are compatible with Signamax keystone faceplates and snap-in patch panels (24-port 1-RMS and 48-port 2-RMS) providing flexibility in field installation and easy connection to the telecommunications bonding and grounding system.</p>
Package Qty.	1

PRODUCT FEATURES	-
Features	<ul style="list-style-type: none"> • Meet or exceed TIA-568-C.2 performance specifications • Meet 10G IEEE 802.3an transmission requirements • Supports category 6A 100-meter 4-connector channel performance • Overall solid shielding design • Circuit identification icons and dust covers are part of the kit • Compatible with Signamax screened snap-in patch panels and work area faceplates • Contact design provides enhanced plug to jack connection integrity and protects against damage caused by insertion of 4 or 6 position plugs • Compatible with Signamax KJMT-8600 multipair termination tool and standard single -position 110 punch-down tool • 110-type contacts provide improved wire retention and ease of termination • T568A and T568B wiring with an easy to read color-code wiring label for maximum flexibility • Rated for at least 750 plug insertion cycles • Cable diameters 5-9 mm (0.2-0.35 in)

SPECIFICATIONS & DIMENSIONS	-
Transmission Performance	ANSI/TIA-568-C.2, IEC/ISO 11801, ISO/IEC 60603-7-51: exceeds category 6A (1-500 MHz) specifications
Jack Type	8p8c (8-position, 8-contact) "RJ45" style
Wiring Scheme	ANSI/TIA-568-C.2: T568A & T568B ISO/IEC 11801 2nd Ed.: 8-position pin/pair assignment (1-2/3-6/4-5/7-8)
Mounting Dimensions	W 14.6 mm x H 16.2 mm x D 29.4 mm W 0.58 in x H 0.64 in x D 1.16 in
Physical Characteristics	Housing: screened case: copper C2680, 0.25 mm (0.0098 in), 100 micro inches nickel plated contact holder: high impact thermoplastic, PBT UL94V-0 fire retardant Jack contacts: phosphor bronze 5100W temper wire, min 50 in of gold plating over 100 in nickel plating
Electrical/Optical Characteristics	Insulation resistance: min 500 MOhm @ 100 Vdc Dielectric withstanding voltage: 1,000 Vdc/ac peak contact to contact @ 60 Hz for 1 min Spring wire contact resistance: max 20 MOhm DC contact resistance: max 0.1 Ohm
Environmental Characteristics	Storage temperature: -40 °C - +68 °C (-40 °F - 154 °F) Operating temperature: -10 °C - +60 °C (-14 °F - 140 °F) Humidity: 10 % - 90 % RH
Warranty	5-year limited component warranty