

Fiber Optic Assemblies

- 100% tested
- Optical Multimode 1 (OM1) fiber supporting 200/500 MHz.km OFL at 850/1300 nm.
- Optical Multimode 3 (OM3) fiber supporting 2000 MHz.km EMB at 850 nm.
- Optical Multimode 2 (OM2) fiber supporting 500 MHz.km OFL at 850/1300 nm.
- 10 Gigabit transfers up to 300 feet using 850 nm VCSEL source
- LC Connector Dimensions: 10.75mm Height x 12.5mm Width x 50mm Depth (with Installed duplex clip)
- Maximum Connector Loss: 0.50 dB
- Typical Connector Loss: 0.30 dB
- Typical Return Loss: -25 dB
- Jacket Material: PVC (OFNR riser-rated)
- Jacket OD: 3 mm
- Installation Tensile Load: 100 N (445 lbs)
- Long-Term Tensile Load: 50 N (222 lbs)
- Maximum Tensile Load: 100 N/cm
- Installation (Loaded) Minimum Bend Radius: 5.0cm (1.97in)
- Long-Term (Unloaded) Minimum Bend Radius: 3.0cm (1.2in)
- Crush Resistance: 750 N/cm
- Impact Resistance: 1,000 cycles
- Flex Resistance: 5,000 cycles
- Attenuation at 1300 nm: 1.0 dB/km
- Attenuation at 850 nm: 3.5 dB/km
- Operating Temperature: -20°C to +70°C

Part Number Structure:

ST to ST
FI-C002-xx



LC to LC
FI-C002-xxLC



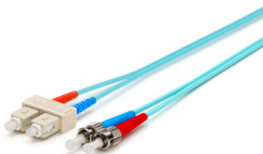
SC to SC
FI-C002-xxSC



SC to LC
FI-C002-xxSC/LC



SC to ST
FI-C002-xxSC/ST



ST to LC
FI-C002-xxST/LC



Replace (C) with Glass Size:

- 2 – OM1**
- 4 – OM3**
- 5 – OM4**
- 3 – SingleMode**

Replace (xx) with Length:

- 3 – 3ft**
- 6 – 6ft**
- 10 – 10ft**
- 15 – 15ft**
- 30 – 30ft**