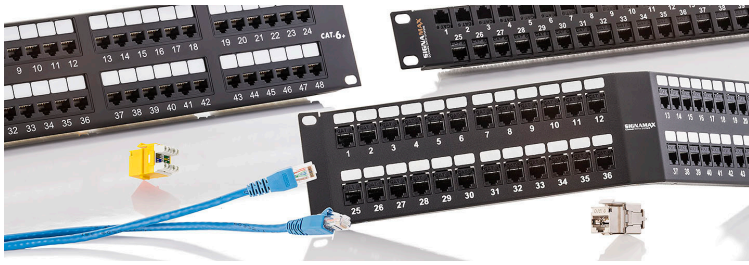


Category 6 Cabling Solutions



The Signamax Category 6 Connectivity Solution is designed to exceed TIA Category 6 and ISO Class E performance specifications. With usable bandwidth beyond 250 MHz, the Signamax Category 6 Connectivity Solution provides a powerful, cost-effective platform to support the most bandwidth-intensive applications. Signamax connectors, patch panels, connecting blocks, and patch cords are combined to provide an advanced-performance solution for today's most demanding applications.

Designed to support applications from the data center to the work area, the Signamax Category 6 System delivers both advanced performance and reliability for the most demanding network requirements. System components include modular connectors, patch panels, and patch cords engineered to deliver guaranteed performance for today's most demanding applications.

Work Area Outlets

- Exceed ANSI/TIA-568-C.2 component performance specifications
- Support TIA-568-C.2 four-conductor 100-meter channel performance
- Available in both unshielded and shielded designs
- Screened jacks feature an overall solid-metal shielding design
- Termination: single-position 110 tool or MT-8600 multipair tool
- Easy-to-read T568A/B wiring scheme color-code label
- Compatible with Signamax snap-in patch panels and faceplates



Patch Panels

- Exceed ANSI/TIA-568-C.2 component performance specifications
- Support TIA-568-C.2 four-conductor 100-meter channel performance
- Available in unshielded and shielded designs
- MD-Series panels offered in 12-, 24- and 48-port sizes
- MT-Series offered in 24-, 48- and 72-port high-density sizes
- MT-Series panels available in straight and angled styles
- Termination: single-position 110 tool or MT-8600 multipair tool



Patch Cords

- Transmission performance meets or exceeds TIA-568-C.2 specifications
- Available in both unshielded (U/UTP) and shielded (F/UTP) designs
- ETL verified 26-AWG stranded cable for greater flexibility
- Compatible with T568A and T568B wiring schemes
- Made-to-order lengths are available
- Slim-profile snag-free boots with durable flexible cable strain relief
- 100% transmission tested to ensure consistent quality and performance



Cross-Connect

- Transmission performance meets or exceeds TIA-568-C.2 specifications
- Accommodate 22-26 AWG solid conductors
- High-impact 94V-0 flame-retardant plastic
- Available in wall or rack-mount designs
- 110 wiring blocks are available with or without mounting legs
- 110 blocks are available in a 4-pair size with color code

CAT 6

