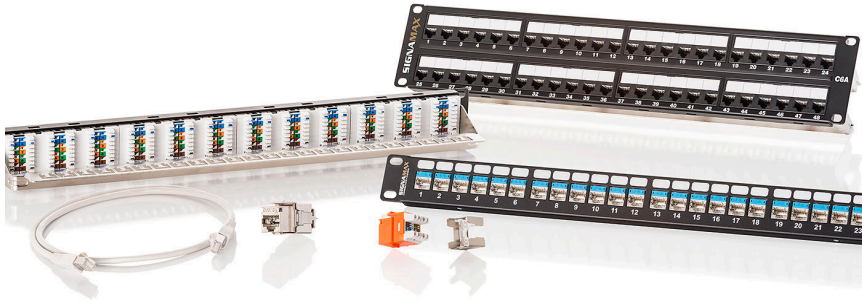


Category 6A UTP Cabling Solutions



For the highest level cabling system performance, specify the Signamax Category 6A Unscreened Connectivity Solution. This ultrahigh-performance solution has been designed to meet 10 Gigabit IEEE 802.3an transmission requirements and is guaranteed to exceed ANSI/TIA-568-C.2 Category 6A and ISO Class EA performance requirements.

Designed to support applications from the data center to the work area, the Category 6A Unscreened System delivers both advanced performance and reliability for the most demanding network requirements. The Category 6A System is designed to eliminate alien crosstalk, ensuring the performance of 10GBASE-T network applications. System components include modular connectors, patch panels, and patch cords engineered to deliver guaranteed performance for today's most demanding applications.

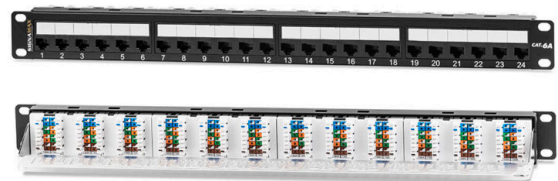
Work Area Outlets

Exceed ANSI/TIA-568-C.2 component performance specifications
 Meet IEEE 802.3an 10 Gigabit Ethernet transmission requirements
 Unscreened jacks feature a solid metal cap eliminating alien crosstalk
 Termination: single-position 110 tool or MT-8600 multipair tool
 Easy-to-read T568A/B wiring scheme color-code label
 Compatible with Signamax snap-in patch panels and faceplates



Patch Panels

Exceed ANSI/TIA-568-C.2 component performance specifications
 Meet IEEE 802.3an 10 Gigabit Ethernet transmission requirements
 MD-Series panels offered in 24- and 48-port sizes
 MT-Series offered in 24-, 48- and 72-port high-density sizes
 MT-Series panels available in straight and angled styles
 Termination: single-position 110 tool or MT-8600 multipair tool



Patch Cords

Transmission performance meets or exceeds TIA-568-C.2 specifications
 Meet IEEE 802.3an 10 Gigabit Ethernet transmission requirements
 ETL verified 26-AWG stranded cable for greater flexibility
 Compatible with T568A and T568B wiring schemes
 Made-to-order lengths are available
 Slim-profile snag-free boots with durable flexible cable strain relief
 100% transmission tested to ensure consistent quality and performance



Cross-Connect

Support ANSI/TIA-568-C.2 category 6A channel performance
 Accommodate 22-26 AWG solid conductors
 Minimum 200 termination cycles durability
 High-impact 94V-0 flame-retardant plastic
 Minimum 5-N transverse extraction force for solid conductors
 Available in 32-, 64-, and 192-pair sizes with mounting legs
 Connecting blocks are available in a 4-pair size with color code

